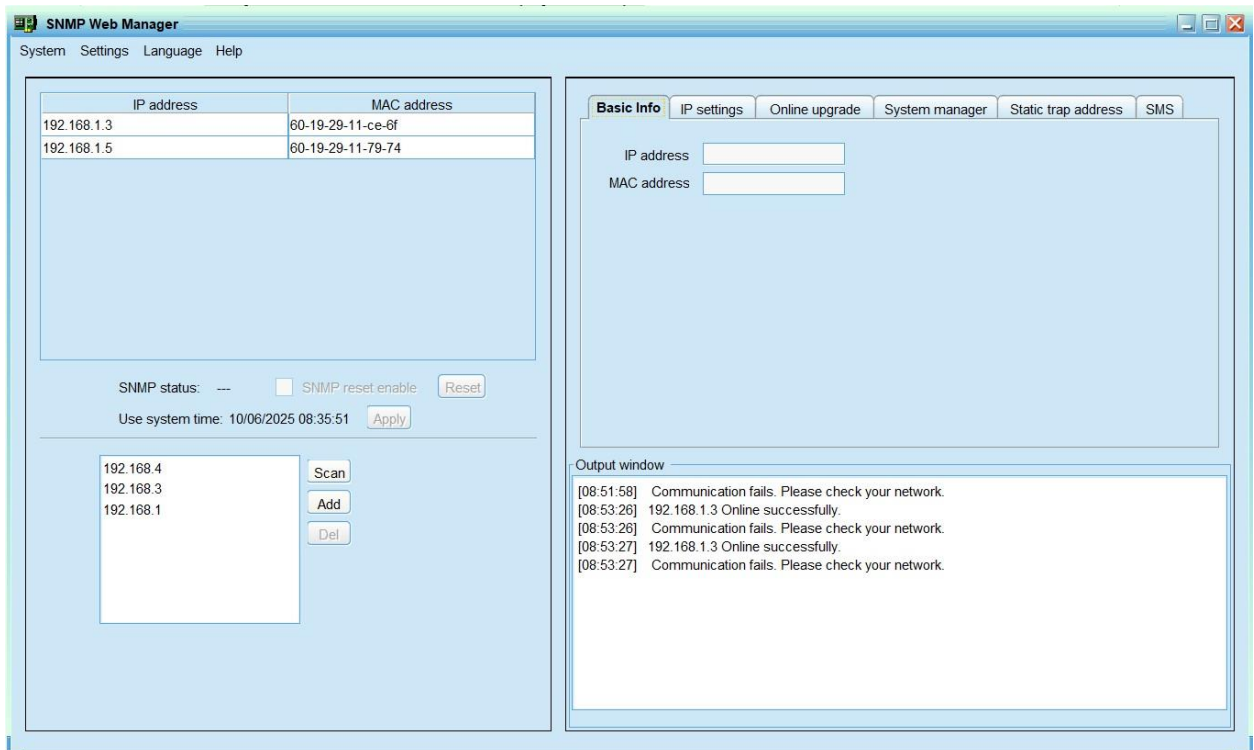


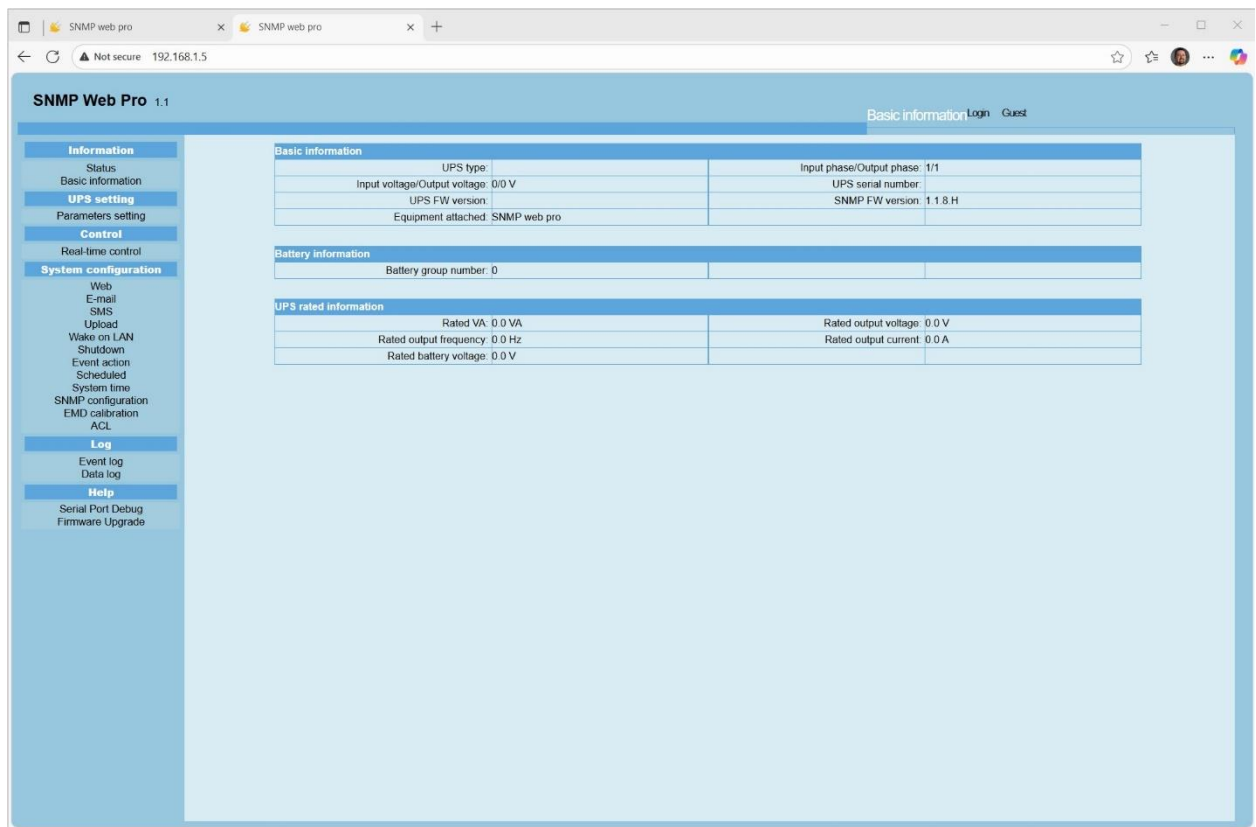
## SOP Upgrade – LR/LX/C/LC/HR SNMP Card

Adds security features not available on 1.1.8.H and earlier.

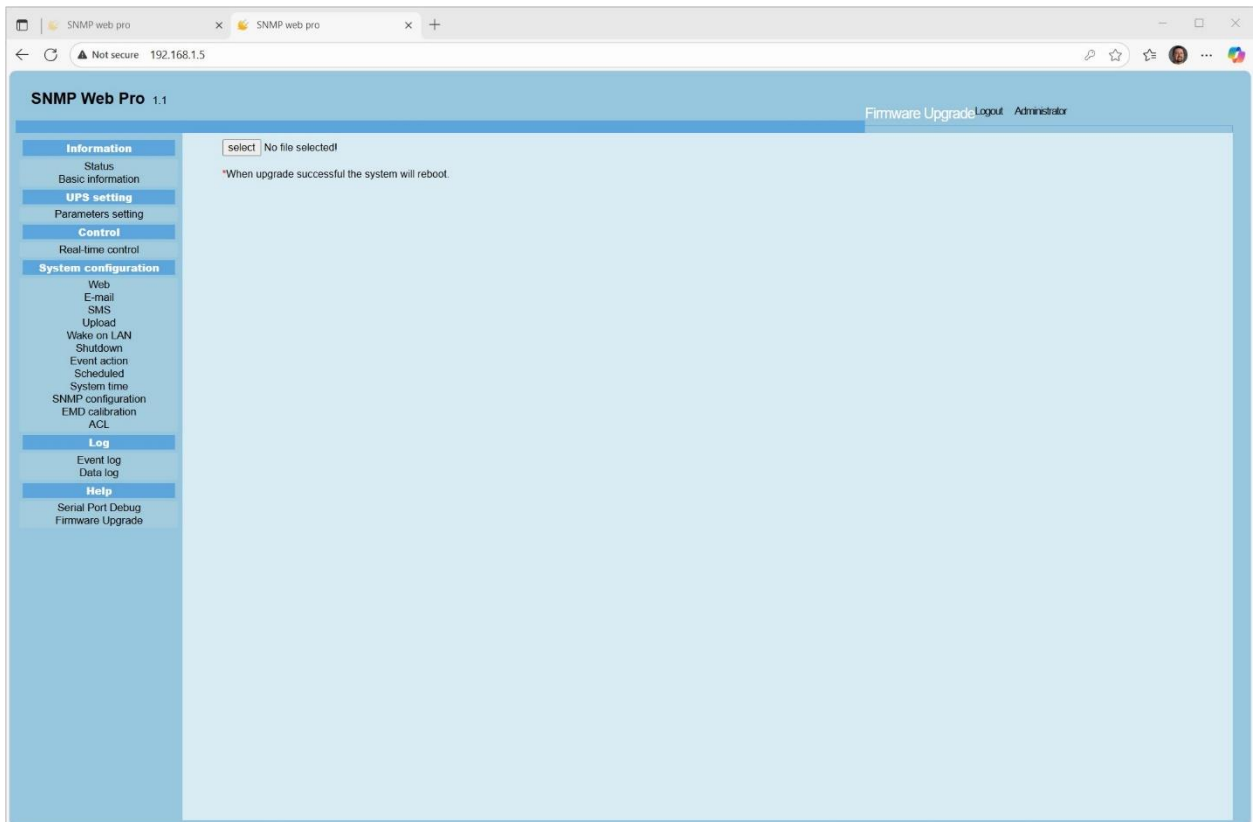
- 1) Open SNMP Web Manager. Scan for the IP address of the card(s) needing to be upgraded. Refer to the IP addresses of said cards in SNMP Web Manager and open IPI address(es) in a web browser.



- 2) Once in the web browser, on the "Basic Information" menu, check that the SNMP FW Version is 1.1.8H.

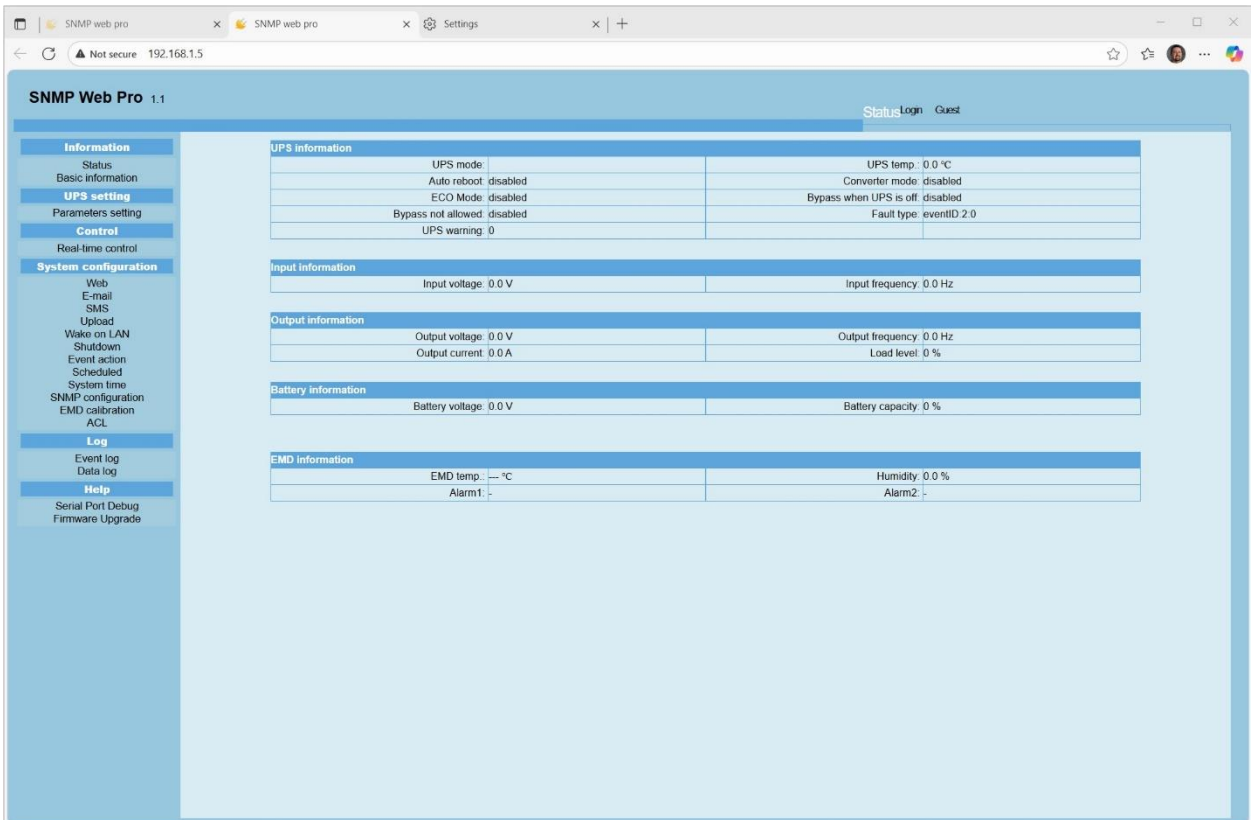
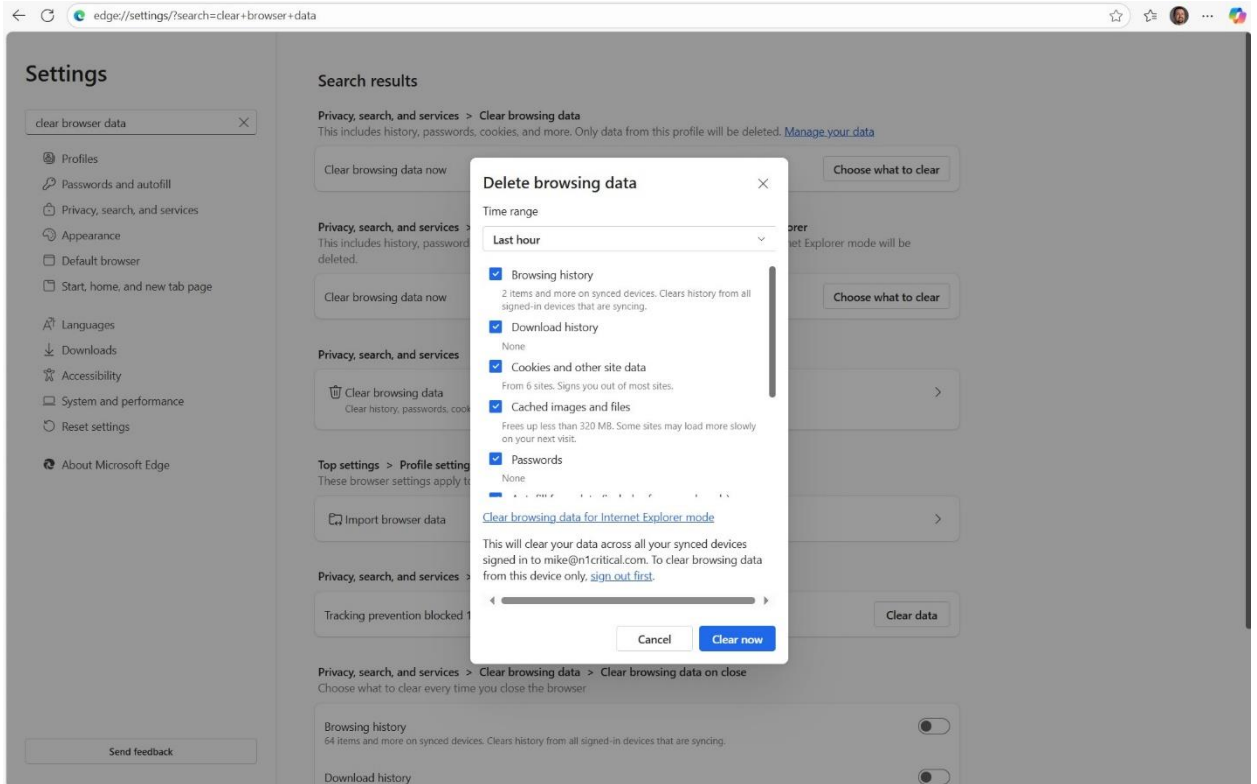


- 3) Click the Firmware Upgrade menu. The first file necessary to update the card firmware is titled: upgrad1-EnvConfigure\_20240516.tar.gz. Select it from its location on your PC using the browser file manager. You must be logged into the SNMP GUI to start the update. If it asks for a password, enter it when prompted (default password is 12345678)

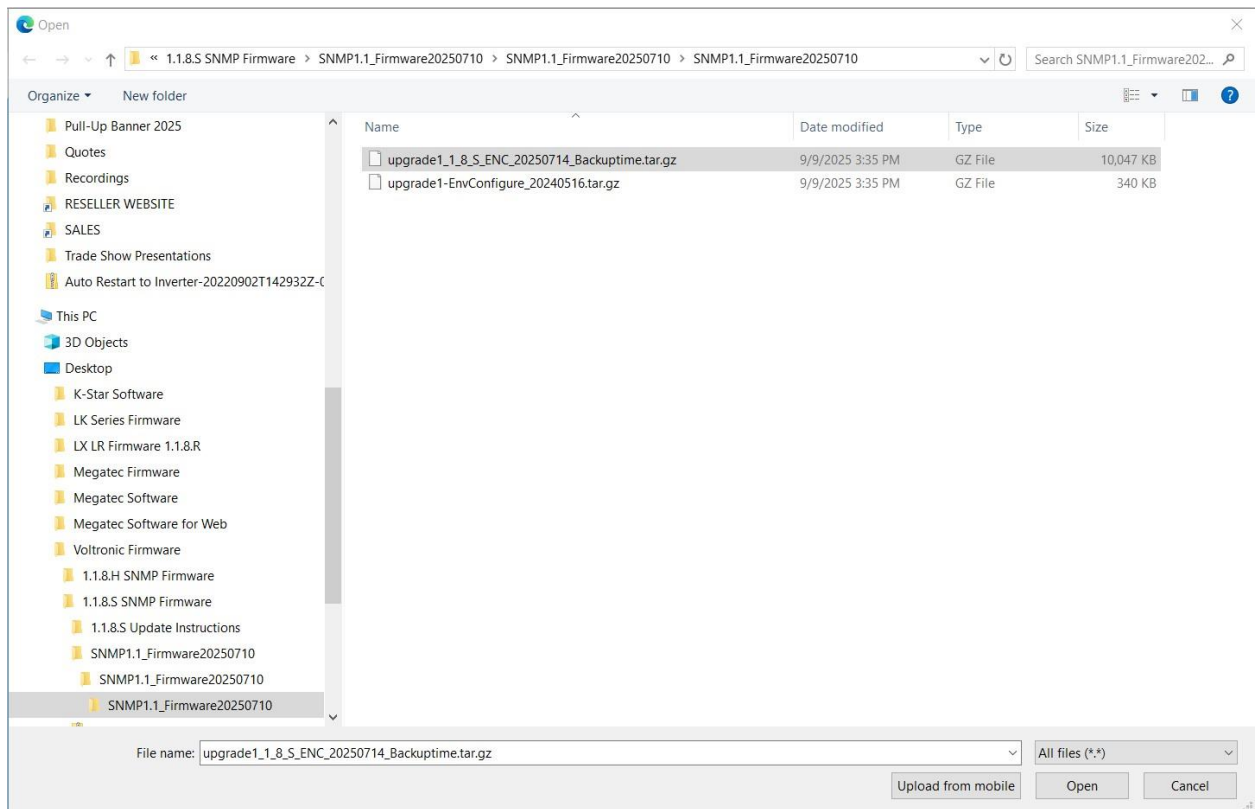


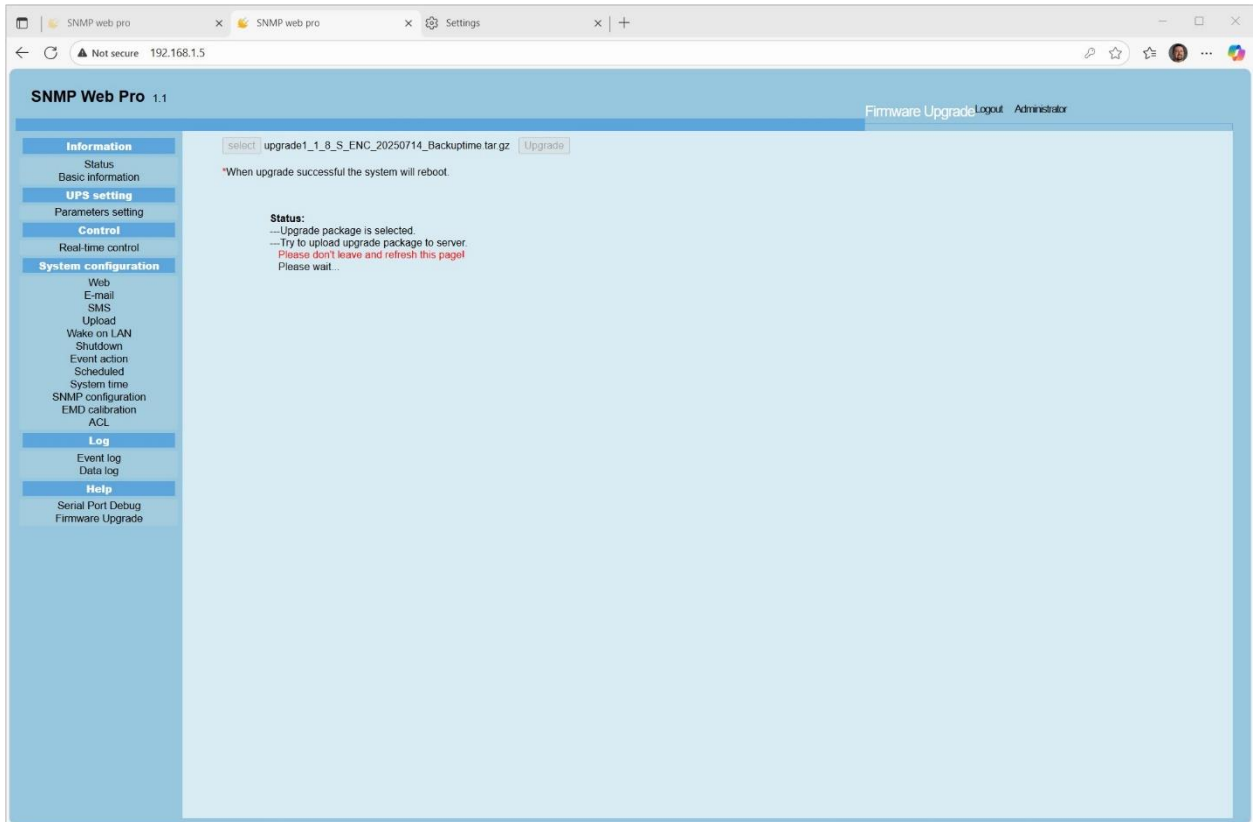
<input type="checkbox"/>	Name	Date modified	Type	Size
<input type="checkbox"/>	upgrade1_1_8_5_ENC_20250714_Backuptime.tar.gz	9/9/2025 3:35 PM	GZ File	10,047 KB
<input checked="" type="checkbox"/>	upgrade1-EnvConfigure_20240516.tar.gz	9/9/2025 3:35 PM	GZ File	340 KB

- 4) After updating the file wait 30+ seconds and then refresh the browser window.
- 5) After refreshing, clear the browser cache and then reload the site. If cache was cleared correctly, you should be logged out the GUI and "login" should appear by the status text in the upper right.



- 6) Log in again and navigate to the Firmware Upgrade menu. Press the Select button and navigate to the file “upgrade1\_1\_8\_S\_ENC\_20250714\_Backuptime.tar.gz” using your browser’s file manager. Press Upgrade button on GUI screen after selecting the file.





- 7) The upgrade process may take several minutes to complete. After the upgrade is complete, wait 30+ seconds to refresh your browser.

SNMP web pro

SNMP web pro

Settings

Not secure 192.168.1.5

SNMP Web Pro 1.1

Firmware UpgradeLogout Administrator

Information

Status

Basic information

UPS setting

Parameters setting

Control

Real-time control

System configuration

Web

E-mail

SMS

Upload

Wake on LAN

Shutdown

Event action

Scheduled

System time

SNMP configuration

EMD calibration

ACL

Log

Event log

Data log

Help

Serial Port Debug

Firmware Upgrade

select

upgrade1\_1\_8\_S\_ENC\_20250714\_Backuptime tar.gz

Upgrade

\*When upgrade successful the system will reboot.

Status:

---Upgrade package is selected.

---Try to upload upgrade package to server

Please don't leave and refresh this page!

Please wait...

---Upload successful!

---Try to decrypt upgrade package.

Please don't leave and refresh this page!

Please wait...

---Decrypt successful!

---Try to extract upgrade package.

Please don't leave and refresh this page!

Please wait...

---Extract successful!

---Try to upgrade.

Please don't leave and refresh this page!

Please wait...

---Upgrade is in progress.

Please don't leave and refresh this page!

The web server will stop!

Please refresh the browser after 30 seconds to check the upgrade result!

- 8) After refreshing your browser, navigate to the Basic Information menu. The SNMP FW Version should show 1.1.8.S. If so, the upgrade process was successful.

The screenshot shows the SNMP Web Pro 1.1 web interface. The browser address bar indicates the URL is 192.168.3.151. The interface has a blue header with the title "SNMP Web Pro 1.1" and a navigation bar with "Basic information", "Login", and "Guest". A left sidebar contains a menu with categories: Information (Status, Basic information), UPS setting (Parameters setting), Control (Real-time control), System configuration (Web, E-mail, SMS, Upload, Wake on LAN, Shutdown, Event action, Scheduled, System time, SNMP configuration, EMD calibration, BACnet, ACL), Log (Event log, Data log), and Help (Serial Port Debug, Firmware Upgrade). The main content area displays the "Basic information" section, which includes two tables. The first table, "Basic information", shows details like UPS type (G6KL ON\_LINE), input/output voltage (240/240 V), UPS FW version (VERFW.00085.08), and SNMP FW version (1.1.8.S). The second table, "UPS rated information", shows rated VA (6000.0 VA), rated output voltage (240.0 V), rated output frequency (60.0 Hz), and rated output current (25.0 A).

Basic information			
UPS type	G6KL ON_LINE	Input phase/Output phase	1/1
Input voltage/Output voltage	240/240 V	UPS serial number	83622305100412
UPS FW version	VERFW.00085.08	SNMP FW version	1.1.8.S
Equipment attached	SNMP web pro		

UPS rated information			
Rated VA	6000.0 VA	Rated output voltage	240.0 V
Rated output frequency	60.0 Hz	Rated output current	25.0 A
Rated battery voltage	48.0 V		