

ADDED FLEXIBILITY AND FUNCTIONALITY TO N1C L-SERIES LITHIUM-ION UPS



N1C SNMP

WisInsight Software

1000-Node Monitoring Suite

Available at no charge with every N1C L-Series UPS purchase is our unique WisInsight UPS monitoring software suite.

View, monitor and map up to 1,000 UPS systems on your network to instantly know when and where problems, such as power outages, occur. You can even place UPS locations on a building floor plan or map to get a visual reference of where a problem is happening.

WisInsight works with all N1C-branded UPS systems, and may also identify other brand UPS systems you have on your network.

See real-time data from each connected UPS and instantly launch into their browser-based control software (GUI) at any time to help rectify problems.

Set up email alerts for when problems arise, or be alerted by an audible alarm and desktop pop-up message when a device goes into an alarm mode (loss of AC power, over-voltage, overheating, etc.)



Features of the N1C SNMP CARD

- Real-time Monitoring and Control (timed discharge test, test to low voltage, switch to bypass, 10-second self-test, wake from bypass)
- Browser-Based Ethernet Connectivity (Mac/PC/Linux)
- Real-time data and status, updated every few seconds (UPS mode, input/output voltage, time on battery, estimated battery remaining runtime, estimated battery remaining charge, battery volts, etc.)
- Email alerts for 1-8 persons
- Historic data logs for UPS Events (switch to battery power, switch to bypass power, AC outage, etc.)
- Historic data logs for Power Information (voltage, frequency, load, battery capacity, UPS temperature)
- Schedule UPS control tasks
- Wake up to 6 network computers with Wake On LAN Packets

N1C
TECHNOLOGIES

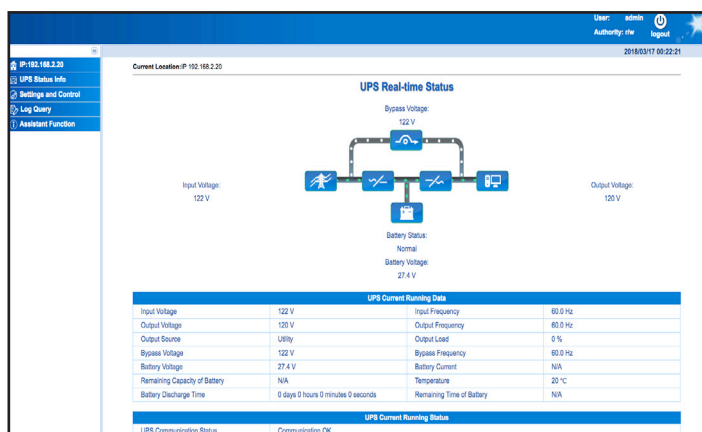
"Leaders In Lithium"

Janesville, Wisconsin
sales@n1critical.com
lithium-ion-ups.com
855-208-0011

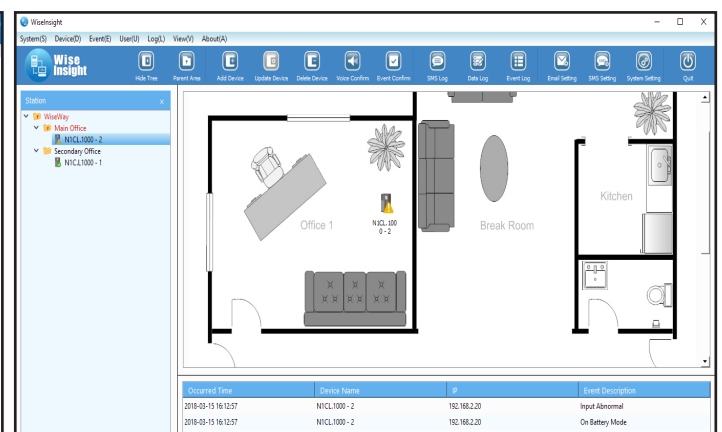
N1 Critical Technologies – SNMP Card Specifications

Model:	N1C.SNMP-Card
Communication Protocol	TCP/IP, UDP, HTTP/HTTPS, SMTP, DHCP, DNS, FTP, ARP, IPMP
GUI Interface	Browser-Based (Windows/Mac/Linux, Chrome, Firefox, Internet Explorer, Opera, etc.)
SNMP Protocol	V1/V2/V3
Network Port	1x10/100M Ethernet (RJ45)
Indicators	3xLEDs (Power, Status, Alarm)
Firmware Updates	Available via Internet download
Language	English, Chinese
Secure Mode	SNMP V3, HTTPS
Input Voltage	9~15VDC
Operating Temperature	32°-140°F
Humidity	10% ~ 95% RH, Non-condensing
Supported MIB	RFC1628
LAN Connection	RJ45
Baud rate	2400
UPS Planned Tasks	10-Second Discharge Test, Discharge To Low Voltage Test, Discharge Time Test, UPS To Bypass Mode, UPS to Bypass for XX Minutes, Wake Up From Bypass
Wake On LAN	Yes (up to 6 connected computers)
Email Alerts	Yes (up to 8 email addresses)
Logs	Event Logs, Data Logs (Exportable to CSV file)
Reports	Email logs to 4 email addresses
Compatible Software	WiseInsight (1000-node network UPS monitoring software)

Software Screenshots



Status screen of WiseWay GUI



WiseInsight "map" showing active alarm